

**SHARP®**

AR-168S

AR-168D



**multifunction** document system

*Digital*  
**IMAGER™**  
Advanced Workgroup System

# advanced functionality in a compact desktop design

The new Sharp AR-168S and AR-168D advanced Digital IMAGERs deliver big machine functionality in a small desktop size. Both models offer high-quality copying, 600 dpi PC printing, and standard color PC scanning. But that's not all. With advanced features that include electronic sorting, offset stacking, and smart device sharing, the AR-168S/168D IMAGERs are well equipped to deliver the productivity required in today's fast-paced small office environments. The cost-efficient, conventional supply system (separate toner, developer, and drum) is more economical than cartridge-based systems—and can reduce your total cost of ownership. And with flexible options including Super G3 faxing, advanced networking, web-based management and more, the AR-168S/AR-168D IMAGERs can easily grow to meet your ever-changing business needs.

The Sharp AR-168S/168D Digital IMAGERs are versatile solutions for any growing business looking to maximize productivity.



## features at a glance

- 16-ppm compact desktop digital copier with high-quality 600 dpi output
- Flexible paper handling includes a 250-sheet paper supply, upgradeable to 500 sheets
- 50-sheet bypass tray allows easy copying onto different size paper ranging from 3 1/2" x 5 1/2" up to 8 1/2" x 14". The bypass tray also simplifies copying onto envelopes, labels, and transparencies.
- 30-sheet automatic document feeder allows you to duplicate multiple page documents quickly, with minimal effort (reversing feeder on AR-168D)
- Up to 100-page electronic sorting and offset output stacking allows copying of multiple sets quickly and efficiently
- 25% to 400% zoom magnification allows a wide range of enlargement/reduction settings. Also includes eight preset modes for easy image to paper sizing.
- Standard JBIG speed-enhanced printing system
- Standard full-color PC scanning system
- USB-2.0 and IEEE 1284 bi-directional parallel interfaces for flexible PC connectivity.
- Optional Super G3 fax kit with 118 auto-dial destinations
- Advanced networking options

### On-the-fly color PC scanning!

Enhance your document workflow with built-in color PC scanning. Easily convert both black and white and color documents into digital files that can be shared, archived, or e-mailed. The versatile AR-168S/168D IMAGERs eliminate the need for extra peripherals that take up valuable office space. Plus with Sharpdesk™ Light integrated desktop document management software, you can edit, save, or distribute your documents electronically—quickly and effortlessly.



### High-efficiency out-of-the-box PC printing

The Sharp AR-168S/168D IMAGERs offer impressive standard PC printing that outputs jobs at 600 dpi resolution. Sharp's host-based print controller utilizes JBIG compression, reducing the file size of jobs for faster printing. Additionally, the AR-168S/168D IMAGERs offer a standard USB 2.0 interface and IEEE 1284 parallel interface, providing flexible connection alternatives. For added efficiency, the AR-168S/168D IMAGERs can speed up your workflow with flexible features that include 2-up/4-up printing, fit-to-page, electronic sorting, and auto duplexing (AR-168D). You can also add low-cost network printing with an optional External Print Server (AR-PS3100).

# enhance your workflow with advanced networking

Maximize the capabilities of your AR-168S/168D IMAGERs with **full-color network scanning** and **feature-rich network printing!** With simple plug-and-play operation, the optional AR-NB2N full-featured Network Expansion Kit offers PCL6 network printing, walk-up network scanning, web-based device management, and more. And, with Sharp's easy-to-use utilities and driver software, the versatile AR-168S/168D IMAGERs can easily integrate into an existing network environment.



## Convenient color network scanning

With the optional Network Expansion Kit, everyone in your office can access the convenience of built-in color scanning. Enhance your workflow and increase your productivity with walk-up scan destinations that include Scan to E-mail, Scan to desktop, Scan to FTP, Scan to URL, and Scan to Print. Also included is Sharpdesk™ Light Document Management Software, which allows you to edit, save, or distribute your scanned documents quickly and easily.

## Speedy, PCL6 network printing

With PCL6 print emulation, your documents will be processed quickly—so even large jobs won't slow down your workflow. Plus, it's backward compatible with PCL5e, so even older documents will print with predictability. With 64 MB standard memory, 600 dpi output resolution, and 10/100baseT networking, the Sharp AR-168S/168D IMAGERs deliver razor-sharp quality documents over your network quickly and efficiently. And, with advanced print features that include booklet mode, front cover page mode, and 2-up/4-up mode, you can produce high-quality documents that truly look professional.

## Intuitive Sharp utilities

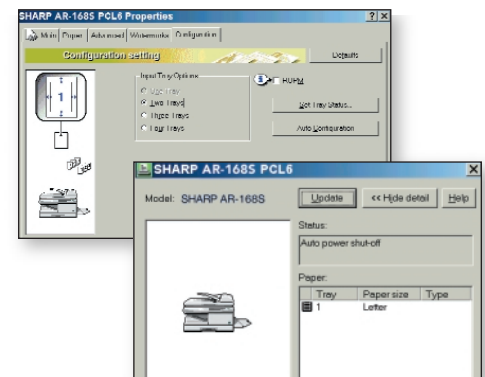
Sharp's easy-to-use software, makes managing your networked AR-168S/168D IMAGERs incredibly simple. Sharp's Printer Administration Utility enables you to manage any SNMP-compliant printer on your network—right from your desktop. And with Printer Status Monitor, users can view the status of print jobs and printer conditions through an easy-to-use graphical interface.

## Advanced web-based management

Sharp's web-based management feature provides the user and administrator with many time-saving tools, such as device configuration, scan destination management, feature control, Remote E-mail Diagnostics, IP/MAC Address Filtering, and more. The web-based management features are simple, yet sophisticated, and provide password protection at both the user and administrator level.

## Stay up-to-date with My Sharp

To make learning all the features of your IMAGER simple and easy, ask your local Authorized Sharp Dealer about My Sharp, a new dedicated customer-care website that allows you to maximize the features, locate resources, and find information specific to your Sharp Digital IMAGER. (available Spring 2004)



*Integrated, easy-to-use utilities make managing your AR-168S/168D IMAGERs incredibly simple.*

## Copier Specifications

Type:	AR-168S: Digital simplex copier-based desktop MFP AR-168D: Digital duplex copier-based desktop MFP
Standard Functions:	Copy/PC Print/Color (or monochrome) PC Scan
Copy System:	Dry electrostatic transfer system
Originals:	Sheets, bound documents
Original Size (Max):	8.5" x 14"
Copy Size:	Min. 5.5" x 8.5", Max. 8.5" x 14"
Copy Speed:	16 copies per minute (8.5" x 11")
Continuous Copy:	Max. 99 copies
First Copy Out Time:	9.6 sec. (ready) 25 sec. (preheat) 40 sec. (auto shut-off)
Warm Up Time:	0 seconds (when Energy Saver mode is not enabled)
Zoom Range:	25% to 400% in 1% increments (with SPF/RSPF 50%/200%)
Fixed Zoom Mode:	25%, 50%, 64%, 78%, 100%, 129%, 200%, 400%
Exposure System:	Fixed optical source, slit exposure (stationary platen)
Paper Feed System:	Standard: (1) 250-sheet paper cassette with automatic feed Standard: (1) 50-sheet manual bypass tray Optional: (1) 250-sheet paper feed unit
Original Feed System:	AR-168S: 30-sht. document feeder (SPF)/document glass AR-168D: 30-sht. reversing document feeder (RSPF)/document glass
SPF/RSPF Feeding:	12 originals per minute (letter/100%/simplex), original weight 14 to 24 lb. Bond
Paper Type:	Paper Cassettes: 15-21 lb. standard or recycled bond paper Bypass Tray: up to 50 sheets 14-34 lb. standard or recycled bond paper; post cards/envelopes (#10 Monarch)/OHP film/labels one sheet feed
Memory:	32 MB (shared)
Copy Resolution:	Scan: 600 dpi, output: 600 dpi
Exposure Modes:	Photo mode: 600 x 600 dpi Auto exposure: 600 x 300 dpi (manual 5 steps)
Grey Scale:	256 gradations/2 levels
Copy Features:	Stream feeding mode (SPF/RSPF), electronic sorting, 2-in-1 copy, offset stacking, auto tray switching, margin shift, zoom, variable memory adjustment, auto shut off, and duplex copy/print (AR-168D)
Output Tray Capacity:	200 sheets (face down)
Offset Stacking:	Standard paper shifter (offset stacks sets by 1 inch in output tray)
Fusing System:	Heat roller
Developer System:	Magnetic brush development
Light Source:	Tri-color CCD light source (RGB)
Power Requirement:	AC 120 V, 60 HZ, 8 Amps
Power Consumption:	Max 1000 W, stand-by 80 W/h, auto shut off 8.8 W
Operating Conditions:	Temperature: 50 degrees to 86 degrees F, Humidity: 20% to 85%
Weight:	AR-168S: Approx. 50 lbs; AR-168D: Approx. 70 lbs.
Dimensions:	AR-168S: 20.4" (w) x 19.8" (d), x 15.0" (h) AR-168D: 20.4" (w) x 19.8" (d), x 18.3" (h)

## JBIG Speed-Enhanced Printer Function (Standard)

Emulation:	Sharp SPLC host-based controller with JBIG compression
Print Speed:	16 pages per minute one side (letter) with ROPM
First Print Time:	9.6 seconds (without data transfer time; ready)
Resolution:	600 dpi
Operating System:	Windows 95/98/ME, NT4.0, 2000, XP
Software:	Print driver, Printer Status Monitor
Rip Once Print Many:	Yes
Interface:	Standard: IEEE 1284 (ECP) parallel port, USB 2.0
Memory:	Shared
Features:	Offset print, status monitor, 2-up/4-up printing, fit to page, watermark, duplex printing (AR-168D only)

Design and specifications subject to change without notice.

Sharp is a registered trademark of Sharp Corporation.  
All other trademarks and registered trademarks are property of their respective holders.

<sup>1</sup> Resolution settings higher than 600 x 1200 dpi are interpolated

<sup>2</sup> Based on ITU-T Test Chart #1 in standard resolution. Actual transmission times will vary according to line conditions.

<sup>3</sup> Direct PDF printing requires optional ARPK1N Postscript kit

<sup>4</sup> Color scanning at 600 dpi requires 256 MB memory expansion

## Scanner Function (Standard)

Type:	Flat head full color/monochrome PC scanning system
Resolution:	Basic: 600 x 1200 dpi <sup>1</sup> , setting range 50 - 9600 dpi <sup>1</sup>
Operating System:	Windows 98/ME, 2000, XP
Original Type:	Sheets/books up to letter/legal size
Scanning Method:	Original cover/SPF/RSPF (AR-168D)
Output:	8 pixels/bit, A/D 16 bit
Protocol:	TWAIN, WIA (Windows XP)
Interface:	USB 2.0 (compatible with USB 1.1)
Software:	Sharpdesk™ Light (ver. 2.7) document management software, Button Manager, Composer (single user)
PC Scan Destinations:	5 preset PC scan destinations can be configured using Button Manager
File Formats:	BMP/JPEG/TIFF

## Super G3 Fax Kit (Optional)

Modem Speed:	Super G3 (up to 33.6 kbps) <sup>2</sup>
Transmission Time:	3 Seconds <sup>2</sup>
Compression Type:	MH, MR, MMR, JBIG
Max. Original Size:	Legal
Resolution:	Standard/Fine/Superfine
Memory:	2 MB
Job Memory:	Up to 50
Rapid Dials:	18
Speed Dials:	100
Group Dials/Broadcasting:	18 groups/100 destinations

## AR-NB2N Network Expansion Kit (Optional)

Features:	PCL6 network printing and network scanning with web-based management function
Standard Memory:	64 MB standard, expandable to 320 with 256 MB DIMM
Client PC Requirements:	IBM PC/AT compatible (P3/500 MHz recommended), 100 MB available hard disk space, and 800 x 600 dpi screen resolution
Operating Systems:	Windows 95/98/ME/NT4/2000, Windows XP, Mac OS 8.6 - 9.x, 10.2 (when using ARPK1N Postscript Kit)
Network Protocols:	TCP/IP, IPX/SPX (Netware), NetBEUI, and Ether Talk/AppleTalk
Interface:	RJ45 Ethernet; 10/100baseT
Utilities:	Web-based management, NIC Manager, integrated software installer, Printer Administration Utility (PAU), Printer Status Monitor, On-line manual
Print Emulation:	PCL6/PCL5e/PS3 (option)
Print Speed:	16 pages per minute one side (letter)
Print Resolution:	600 dpi
Print Features:	2-up/4-up printing, fit to page, auto paper select, booklet print, front cover print, direct print, watermarks, and duplex print (AR-168D) <sup>3</sup>
Scanning Resolution:	Up to 600 dpi <sup>4</sup>
Operating Systems for Scanning:	Windows 98/ME, 2000, XP
Scanning Features:	Scan to E-mail, Scan to Desktop, Scan to FTP, Scan to URL, and Scan to Print
Scanning Formats:	TIFF, PDF, JPEG
Scanning Software:	Sharpdesk Light (Ver. 2.7) document management software, includes OCR and Sharp Composer (3-user license)

## Optional Equipment and Supplies

AR-D16:	250-sheet paper tray
AR-FX9:	Super G3 Fax Kit
AR-PS3100:	External Print Server
AR-NB2N:	PCL6 Network Printing/Network Scanning Expansion Kit
ARPK1N:	Postscript Level 3 Kit (requires AR-NB2N)
AR-150ABD:	Copier Stand (with door)
AR-150ABS:	Copier Stand (no door)
AR-152MT:	Toner Cartridge (carton of 10 AR-152NT)
AR-152MD:	Developer (carton of 10 AR-152ND)
AR-152DR:	OPC Drum (1 piece)

## SHARP ELECTRONICS CORPORATION

Sharp Plaza, Mahwah, NJ 07430-1163

1-800-BE-SHARP

www.sharppusa.com

# SHARP®

